



Golf Warehouse.nz
New Zealand's #1 Golf Retailer

GWX eDart user manual

Contents

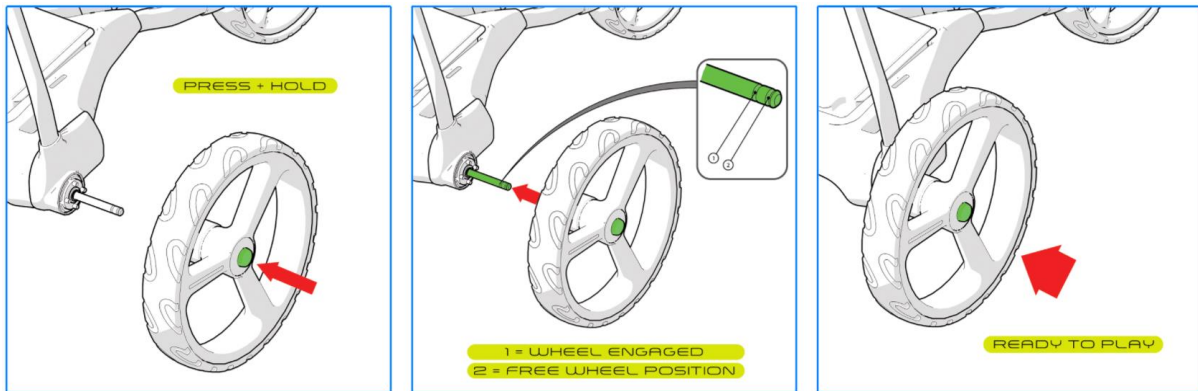
Quick start guide.....	2
Step 1. Fit Rear Wheels	2
Step 2. Open Frame.....	2
Step 3. Front Wheel Assembly	3
Step 4. Scorecard Holder	3
Step 5. Golf Bag	4
Step 6. Operating Instructions:	4
Notes	4
Battery & Charger Guide.....	5
Do's and Don'ts	5
GWX eDart Lithium battery warranty conditions.....	6
Battery warranty disclaimer	6

Quick start guide

Step 1. Fit Rear Wheels

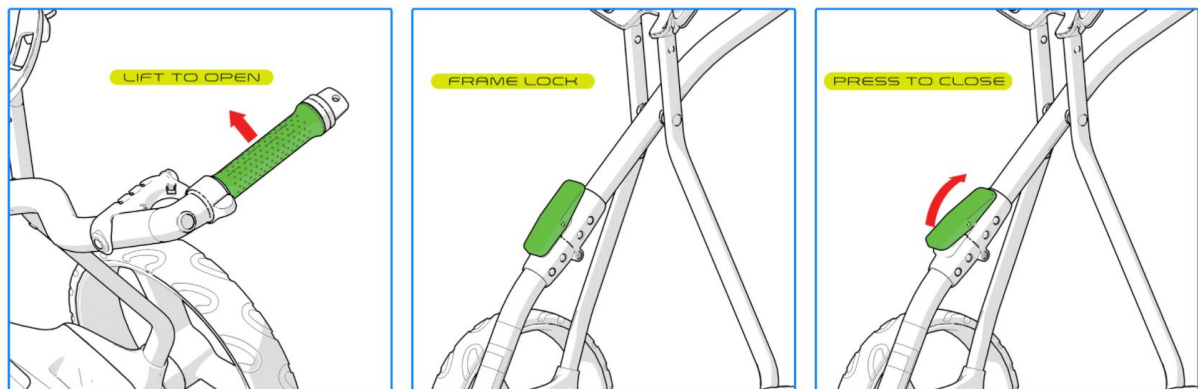
Both rear wheels are interchangeable and can be fitted to either side. Simply press and hold the centre release button on the wheel and guide the wheel carefully onto the axle shaft releasing the button when the wheel is fully inserted into the carts drive sprocket. To remove the rear wheels, depress the centre button on the wheel and slide the wheel off the axle shaft.

You will notice there are 2 positions for the rear wheels on the axle shaft. The wheels should be fully inserted on the axle shaft and engaged with the drive sprocket for normal powered drive, however in the event of a power/battery failure the wheels can be moved outwards to a second outer position on the axle shaft which allows the wheel to become disengaged from the drive sprocket and into a 'freewheeling' position.



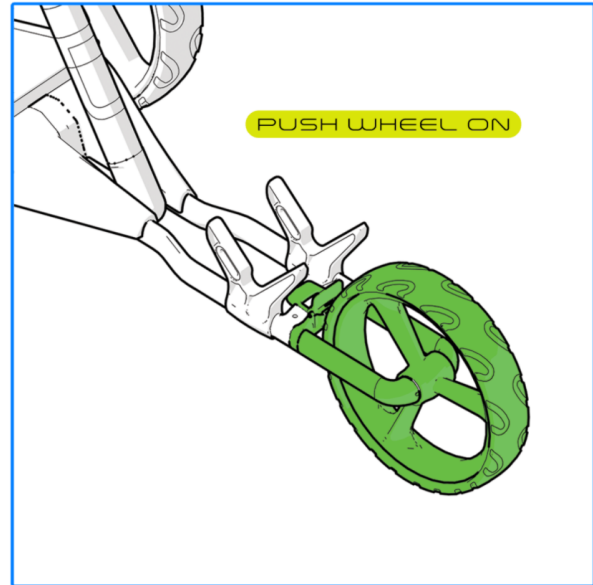
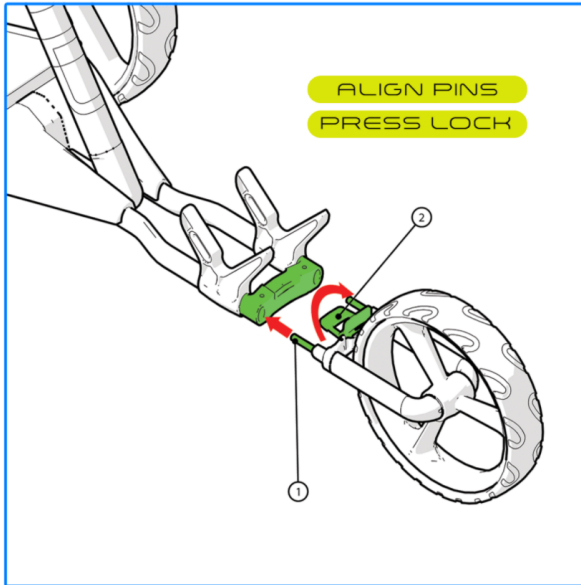
Step 2. Open Frame

After fitting the rear wheels, undo the frame quick release locking strap located next to the battery tray.



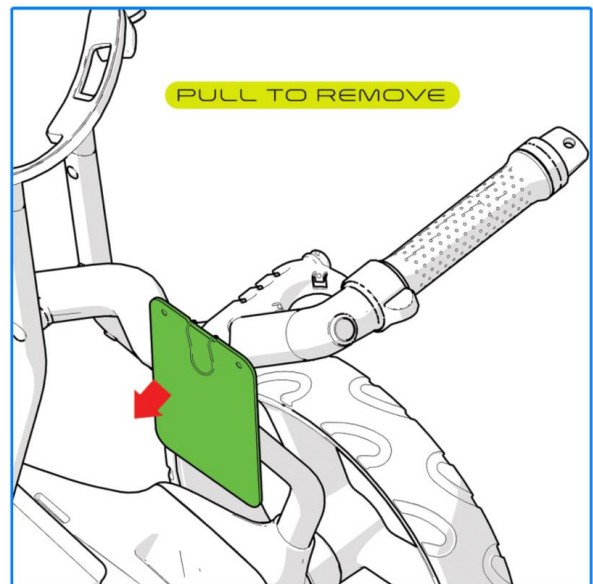
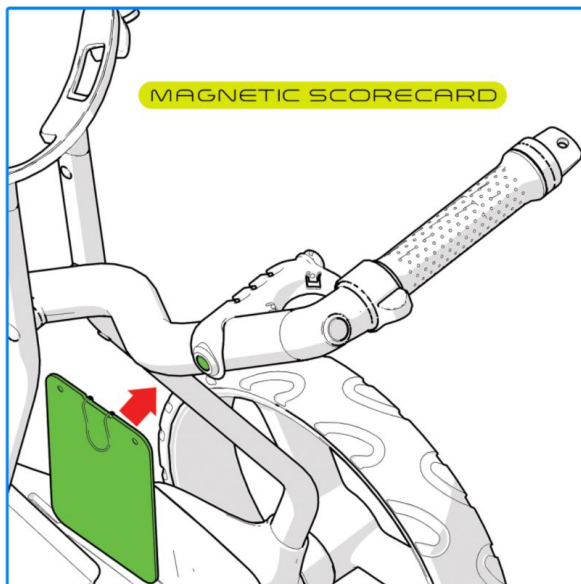
Step 3. Front Wheel Assembly

Once the frame is opened fit the front wheel assembly by simply inserting the locating pins into the main frame. Insert the wheel assembly fully until the quick release catch is fully located. When removing the front wheel depress the release latch and whilst holding open pull out the front wheel assembly.



Step 4. Scorecard Holder

Attach the holder by the magnetic connection next to the accessory station.

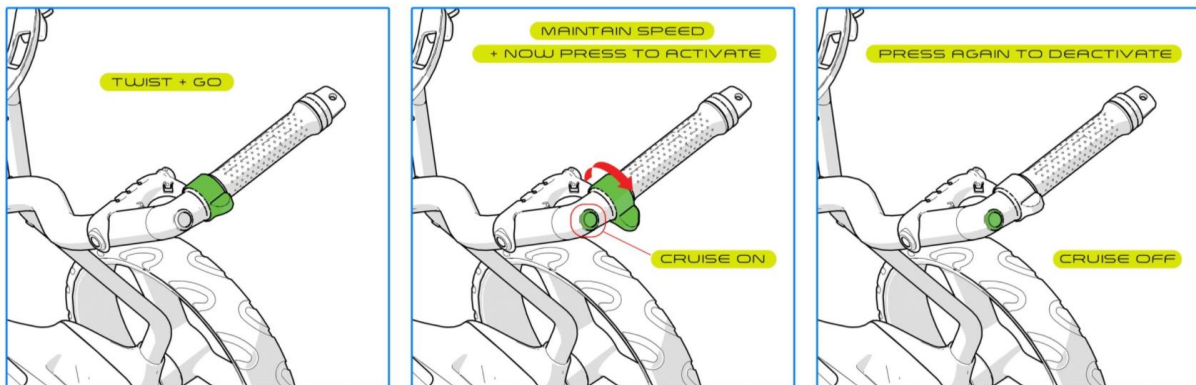


Step 5. Golf Bag

Fit your golf bag to the frame ensuring the base of your bag is located correctly onto the upper and lower bag supports. The eDart trundler accepts a loaded cart bag up to a recommended 18kgs weight. Attach the upper and lower silicon bag support straps and tension accordingly.

Step 6. Operating Instructions:

1. Place the battery in battery tray and connect power plug. Ensure the terminals are red to red and black to black.
2. To move forward simply press the thumb throttle control downwards. The cart has a soft start function that will allow the trundler to start moving forward slowly then automatically increase speed relative to the position of the thumb speed controller.
3. For long straight fairway runs you can utilise the Cruise feature so that both your hands remain free. This feature is a 'walk along' option and you should always remain within arm's length of the cart to regain manual control when needed.
4. Always disconnect and remove battery when finished using the cart and prior to folding for storage.



Notes

Should your cart encounter an immovable obstacle whilst in use the eDart trundler has a circuit protection function that will shut off power to the motor when a current overload is detected.

Depending on the type and extent of current overload the system encounters it may take a short time for the cart to be able to resume normal operation as the electrical circuit may have to undergo a cool down procedure.

To reset simply press the cruise control button once and then operate the thumb control as normal.

Battery & Charger Guide

NOTE: *Only use the approved eDart Battery and Charger supplied. Failure to do so could damage components in the cart and invalidate your warranty.*

The eDart battery is supplied partially charged, please put it on charge before use. A full charging cycle will take around 3-5 hours.

Connect the battery to the charger and then connect to your mains outlet. Whilst your battery is charging a red light will show on the charger, once the charge cycle is complete the green light will show.

Following a normal charge cycle your battery will remain fully charged for at least 3 months.

Your battery contains a sophisticated battery management system (BMS) that protects the cells from damage, prolongs cell life and maintains the cells to optimum levels within the parameters of the application.

Do's and Don'ts

- Charge your battery as soon as possible after use but certainly within 24 hours of use. The most damaging aspect for any rechargeable battery is to leave it stored in a discharged condition.
- Once charged and the GREEN light is on, unplug charger from battery and mains.
- Only use the eDart supplied battery and charger.
- Never try to open the battery or charger, there are no user serviceable parts inside.
- Do not store in your car boot where temperatures can reach over 40 Celsius in summer.
- Always ensure your battery is fully charged before use.

GWX eDart Lithium battery warranty conditions

Golf Warehouse ("the Supplier") warrants each Lithium-Ion Battery as listed below will

- (1) Be free from defects in material and/or workmanship under normal use and
- (2) Conform to the applicable Technical Specifications for the product.

The warranty period of the battery shall be two (2) years from the date of purchase.

Charger Unit – 12 months Warranty

In addition to the product warranty, manufacturer guarantees performance of the product to be maintained at least seventy five percent (75%) of initial battery's capacity for a period of two (2) years, provided that the usage of the product shall have complied with the operating conditions under specification. Warranty only for battery but does not include charger unit.

If the battery complied with the operating conditions under specification becomes unserviceable (not merely discharged) due to defect in material and /or workmanship within the warranty period, manufacturer will replace the battery free of charge except the warranty exclusions listed below.

- (1) The above warranty does not include labour or transportation costs, etc. These costs are the responsibility of the user.
- (2) This Limited Warranty is to the original purchaser of the Product and is not transferable to any other person or entity.

Battery warranty disclaimer

The Manufacturer has no obligation under this Limited Warranty for Product subjected to the following conditions (including but not limited to): Damage caused during shipping or mishandling of the Product

Damage due to improper installation: incorrect connections (series and parallel) for desired voltage and AH requirements, reverse polarity connections or insufficient space for airflow around the battery.

- Environmental damage: inappropriate storage conditions as defined by the Manufacturer; exposure to extreme hot or cold temperatures, fire or freezing, or water damage
- Damage caused during operation; by collision or over-discharging the Product as defined by the Manufacturer Damage due to improper maintenance; under-or over-charging the Product.
- Product that has been modified by anyone other than a Manufacturer representative Tampering or removal of manufacture date codes

- Product that was used for applications other than which it was designed and intended for Product that was under-sized for the application
- Product not stored in adherence to the Manufacturer's storage guidelines

This Limited Warranty does not cover a product that has reached its normal end of life due to usage which may occur prior to the Warranty Period. A battery can deliver only a fixed amount of Energy over its life which will occur over different periods of time depending on the application. The Manufacturer reserves the right to deny a warranty claim if the Product is determined, upon inspection, to be at its normal end of life even if within the Warranty Period.

This limited warranty is in lieu of, and manufacturer refuses and excludes, all other express warranties. Manufacturer further limits the duration of all, whether statutory, express, or implied warranties, including, without limitation, any warranty of merchant ability or fitness for a particular purpose, to the warranty period. Manufacturer's exclusive liability for breach of any warranty on the Battery shall be to replace the Battery within the warranty period in accordance with the terms of this limited warranty. In no event shall Manufacturer be liable for any loss or damages of any other kind, whether direct, incidental, consequential including lost profits, exemplary, special, or otherwise, including any lost profits or removal, shipping, or installation expenses.

EXCEPT FOR THE WARRANTY SET FORTH ABOVE, SELLER MAKES NO WARRANTY WHATSOEVER WITH RESPECT TO THE GOODS, INCLUDING ANY (A) WARRANTY OF MERCHANTABILITY. OR (B) WARRANTY OF FITNESS FOR A PARTICULAR PURPOSE; WHETHER EXPRESS OR IMPLIED BY LAW, COURSE OF DEALING, COURSE OF PERFORMANCE, USAGE OF TRADE OR OTHERWISE.

Lithium battery and charger limited warranty

Manufacturer will not be responsible for any expenses for transportation, installation, freight, recharging, electrical system tests, loss of time, loss of use of equipment, service calls, labour, use of rentals or other expenses which would be considered as incidental or consequential damages. The only remedy available under this warranty is Battery replacement.

If you experience any difficulties or have questions,
please contact Vlad on 021 101 4261 or email v.kasaji@gw.co.nz.